





Table of Contents



4

From The
Partners/Executive Board

6

From The
Executive Director

8

2020
Highlights

14

Advancing
Environmental Sustainability

24

Securing Democratic
and Civil Rights

30

Knowledge
Management

32

Human Resources, Office
and Financial Management

35

Annexes

Our Purpose



Good governance is participatory, consensus-oriented, accountable, transparent, responsive, effective and efficient, equitable and inclusive and follows the rule of law.

It assures that corruption is minimized, the views of minorities are taken into account and that the voices of the most vulnerable in society are heard in decision-making.

Our vision is to establish fair, democratic, and sustainable governance that improves the welfare of Indonesians.

Our mission is disseminating, advancing, and institutionalizing the principles of good and clean governance among government, civil society and business, while considering human rights, gender balance, the marginalized, and environmental sustainability.

Kemitraan works on three fronts:

- Facilitating and consolidating the transformation of governance within the relevant public institutions and strategic actors – building capacity from within.
- Strengthening the capacity of civil society to push forward governance reform – applying pressure from without.
- Synergizing and harmonizing the strategic actions of governance reform and transformation via a network of partnerships – the multi-stakeholder approach.

Message from The Partners/Executive Board



Felia Salim Executive Board

Azyumardi Azra The Partners

THE MOST IMPORTANT FACTOR IMPACTING AND INFLUENCING *KEMITRAAN*'s work in 2020 was the emergence of coronavirus disease 2019, Covid 19. This disease has emerged as the most dangerous pandemic to affect humanity since the 1918 influenza pandemic that continued its deadly spread until 1920. As the year 2020 came to an end, Worldometer reported that over 80 million people had become infected with Covid 19 with 1.8 million losing their lives. The virus has pushed the global economy in what will probably be its worst performance since World War II. Major global events like the Olympic Games have been put on hold. In Indonesia, almost three quarters of a million people were infected with over 20,000 losing their lives. The Indonesian economy is also expected to dip recession – the first time since the Asian Financial Crisis.

Beyond the serious medical and economic impacts of Covid 19, there have been several other concerning developments, some of which impact on core matters of concern to *KEMITRAAN*. Among these is the growing threat posed by hyper-partisanship supercharged by a capacity to create alternate realities through modern communications technologies for significant numbers of citizens in erstwhile politically stable nations. The current case of the USA where a significant percentage of supporters of the losing candidate, fueled by his own immaturity in accepting his loss, is pushing and challenging many long accepted norms and practices in that country. The rise of new-authoritarian and even neo-totalitarian assertions of legitimacy represent nothing short of an existential threat to the constitutional integrity of democratic nations across the world – including of course here in Indonesia. There is a clear urgency for the democratic nations to come together to find ways to confront the challenges posed to democratic norms by the abuse of these new technologies and to do so in ways that protect humanity's long fought progress to protect the rights of free citizens. The 2020 Results of Freedom House's global state of freedom indicates 2020 to be the worst result since the end of the Cold War at the start of the 1990s.



The arrival of Covid 19 since March in Indonesia has also called for *KEMITRAAN* to play its role in the national effort to get on top of this challenge.

As each of these challenges continue to heat up, so does the planet. The economic recession of 2020, including the near collapse of air transportation globally, has not been reflected in reductions in global greenhouse gas emissions. These are continuing to grow while global temperatures in 2020 have again been among the highest in recorded history.

Within our own span of action *KEMITRAAN* has continued to work to improve climate change governance especially in the forestry and peatlands sector that continue to be the source of the majority of Indonesia's national greenhouse gas emissions. At the same time we have been able to further our work in supporting indigenous and other forest dependent communities to enjoy greater control over their own lands whilst at the same time advancing national efforts to restore peatland areas and better protect existing forested areas.

KEMITRAAN's effectiveness and probity in managing programs and projects on environment have been recognised by the Green Climate Fund (GCF). During 2020 the GCF endorsed *KEMITRAAN* as one of its accredited partner. This makes *KEMITRAAN* the first Indonesian nonprofit entity to secure such an accreditation.

The arrival of Covid 19 since March in Indonesia has also called for *KEMITRAAN* to play its role in the national effort to get on top of this challenge. In addition to complying actively with all Covid control strategies, we have also been embracing enthusiastically new technologies to support our work. This has actually provided some increased efficiencies in a number of our work processes and we would expect to institutionalise these even after the epidemic passes. In other areas we have been worked actively in support of counter-Covid 19 work with other partners.

Felia Salim
Executive Board

Azyumardi Azra
The Partners

Message from The Executive Director



Laode Muhamad Syarif Executive Director

AS THE FULL IMPLICATIONS OF COVID-19 EPIDEMIC began to emerge during the first quarter of 2020, *KEMITRAAN* undertook a wide ranging review of our approach to work for the year taking into full account existing obligations to partners from local community partners to donors and to our staff and their families.

A number of key measures included applying new hygiene and protection systems, re-arranging work scheduling including institutionalising work from home systems. These measures were endorsed to support staff and their families. It was also clear there would be a multiplicity of disruptions affecting our partners in the field and their capacity to undertake many regular activities such as field visits and face to face engagements for training and other such activities. After discussion with various stakeholders we were able to secure agreement in April to scale back activities to a more achievable level, which we believed to be 50% of schedule.

By the end of the year, we were actually able to achieve well beyond that figure reaching 69%. Key enabling factors including our capacity to make use of our pre-existing management systems many of which have been digitised, notably our TRACY system, to support our work. We were also able to make effective use of video-communication systems such as Zoom to enable us and our wide network of partners from the National; Government to local governments, NGOs and local CSOs to maintain close programmatic cooperation in delivering our project work.

Despite the COVID-19 challenges, *KEMITRAAN* continued to book some important as outlined below.



Despite the challenges of 2020, KEMITRAAN remains secure financially with reserves in excess of prudential levels to face some other force majeure.

From our close partnership with the Peatland Restoration Agency, KEMITRAAN's program succeeded, through the use of different techniques, to re-wet 30,000 hectares of land, now protected through social forestry schemes. We also supported local village enterprises including cooperatives and village enterprises to build capacity and production that produced solid returns of 22% during this difficult year.

KEMITRAAN's work in support for environmental human rights defenders produced with our partners eight drafts of Community-Based Protection Mechanisms and a further eight drafts of Standard Operating Procedures for Organization-based protection mechanism to better safeguard their rights. At the level of Government engagement our partnership produced four draft legal instruments each intended to provide support HR Defenders especially those working on environmental issues.

KEMITRAAN's long term program of supporting local communities secure social forestry status over the forests nearby continued this year with the accumulated figure now reaching 850,000 hectares. This figure constitutes almost 20% of the full total that have issued by all agencies across the nation. We see this work as critical in ensuring the long term economic security of these communities.

KEMITRAAN's ongoing work in producing its pioneering Police Governance Index took a big step forward in 2020 being able to assess some 461 Police Districts (each covering a city or regency). This result has helped deepen the capacity for both senior management of the police and the wider community to gain a better understanding of the relative performances of police in their regions.

During 2020 KEMITRAAN secured certification as a National Accredited Agency to the Green Climate Fund, the first for an Indonesian entity. We were also accepted by the Think Tanks and Civil Societies Programs' annual Think Tank Index. This prestigious measurement identifies leading institutions of influence across the world.

During 2020 organizational audit and 4 project audits of KEMITRAAN were undertaken. In each audit the results maintained our proud history of an Unqualified Opinion.

Despite the challenges of 2020, KEMITRAAN remains secure financially with reserves in excess of prudential levels to face some other *force majeure*. As we conclude the year we retain a solid portfolio of programs and partnerships that will see us well prepared to face the next couple of years with confidence.



Laode Muhamad Syarif

Executive Director



01

2020
Highlights



- KEMITRAAN supported 14 community groups in selected regions of South Sulawesi, West and East Nusa Tenggara to create Social Forestry Business Groups to leverage their newly secured forest land tenure to develop new sources of business income.



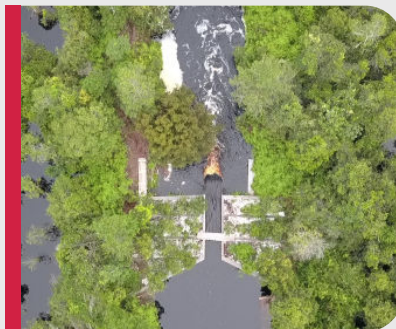
- KEMITRAAN and its partners in the regions have supported the application of social forestry permit of more than 850,000 hectares in 12 provinces. The program continued to support 170,000 hectares in 3 provinces (East Nusa Tenggara, West Nusa Tenggara, and South Sulawesi).



- KEMITRAAN's work on working with local communities to secure Social Forestry status for their forested areas has continued to see KEMITRAAN and partners contribute 20% of the national total.



- 37 villages supported by KEMITRAAN's peatland restoration program enacted village regulation on village annual plan (RKPDDes 2020) related to peat restoration in 6 provinces while 27 villages enacted regulations on peat restoration (PPEG) in 5 provinces.



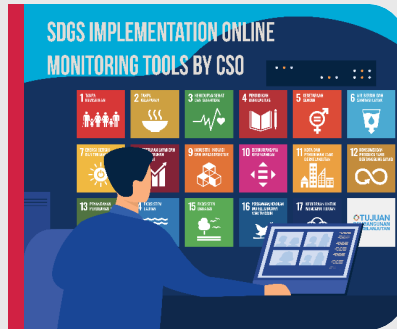
- In support of effort to rehabilitate peatlands, KEMITRAAN with partners has created 50 canal blockings and 252 boreholes/drill wells to wet 4,447 hectares of peatland and 25,760 hectares of forest areas.



- To support local communities reap advantage through paludiculture (peatland based agriculture) KEMITRAAN and partners finalised value chain and cost benefit analyses of appropriate crops with results now incorporated into mid-term developments plans in parts of Riau with growing interest in replication in Western Papua for sago.



- With support of partners in civil society and companies from the digital economy, *KEMITRAAN's* engagement with Parliament to promote a new Personal Data Protection Law has now reached the Advanced Deliberation stage in the Parliament with passage expected during 2021.



- Launched a new online tool to assist CSOs monitor the implementation of several indicators of the Sustainable Development Goal 16 regarding peace, justice and strong institutions in their provinces and cities.



- Following the UNFCCC's Adaptation Fund's endorsement of *KEMITRAAN* as a National Implementing Entity (NIE) in 2019, the first program "Community Adaptation for Forest-Food based Management in Saddang Watershed Ecosystem" in South Sulawesi was launched in late 2020.



- At the end of 2020, two further proposals were endorsed by the Adaptation Fund, namely *Build Coastal City Resilience to Climate Change Impacts and Natural Disasters in Pekalongan City, Central Java Province* which builds upon an earlier *KEMITRAAN* initiative with this same city and the *Sustainable Integrated Watershed Governance in Indigenous People of Ammatoa Kajang Customary Area in Bulukumba Regency in South Sulawesi*.



- The Ministry of Home Affairs and *KEMITRAAN* signed an MoU under which *KEMITRAAN* will apply its established Indonesia Governance Index methodology to support strengthen the Ministry conduct its regular Evaluation of Local Government Implementation.



- *KEMITRAAN* was trusted by the Coordinating Ministry for Politics, Law, and Security Affairs to coordinate CSOs intervention on the issues of anti-corruption, criminal justice reform and human rights protection for CSO activists.



Working Areas Peduli Program

14 Provinces
22 Regencies
69 Villages

20 Customary Communities
14 Partners / CSO
21.968 Beneficiaries





NAULU
TRIBE

KOKODA
TRIBE



02

Advancing Environmental Sustainability





KEMITRAAN's effectiveness in program delivery has been built on the basis of long term and trusted partnerships forged and nurtured across several program and project cycles.

FOR WELL IN EXCESS OF A DECADE *KEMITRAAN*

has been active in creating and delivering programs across many areas that affect the environment. Among the core lessons that inform our programmatic approach is a clear recognition that any sustainable improvements to the sustainability and security of the environment requires an integration of several programmatic streams. This includes the promotion of legislative and other regulatory reforms that enable more sustainable governance of the environment. Related to this includes ensuring the institutional arrangements as well as skills and competence of officials at various levels implementing and enforcing reformed regulations are appropriate. Other critical factors to success include ensuring that the economic and wider interests of communities dependent upon forests are secured and advanced through programs that provide for sustainable management of environments such as forests, peatlands, mangroves and other coastal regions and reefs. This often necessitates ensuring that these communities have secure rights to their lands together with developing programs that empower them to exploit on a sustainable basis the resources they now enjoy. Related to these issues includes ensuring that these communities also have access to other important social services that are available to other citizens.

Improving all of these legal, institutional, social, political and economic factors need to take place at the same as efforts to improve the technological matters related to the environment such as re-wetting peatlands, better managing and monitoring forests to prevent forest fires etc.

KEMITRAAN's experience has been that multi-stakeholder partnerships that bring together national and subnational government agencies, together with civil society and local community groups, private sector and research communities together with network of international partners are able to best ensure that reforms can be affected and implemented and with sufficient community ownership to ensure a sustainable longevity to the improvements to the environment.

One further factor to note from applying this approach is that it does not roll out in a year. *KEMITRAAN's* effectiveness in program delivery has been built on the basis of long term and trusted partnerships forged and nurtured across several program and project cycles.

During 2020 a number of *KEMITRAAN's* programs and project in the area of environmental sustainability have been able to book important milestones and progress.



Monitoring process of forest use by local communities

Sustainable development in protecting nature

As part of a consortium led Chemonics through its BIJAK program, *KEMITRAAN* was able to record a number of achievements. Notably we worked with the Ministry of Environment and Forestry to assist improve management in 248 of 498 conservation areas through zoning & blocking maps as well as assist the Ministry to formulate regulations on conservation partnerships. As an active member of the Multistakeholder Land Problem

Resolution Task Force *KEMITRAAN* support the drafting of a regulatory framework to resolve encroachment problems in conservation areas and also producing a regulatory framework for the protection of ivory hornbills (Conservation Strategy and Action Plan).



Environmental human rights defenders

Among the important challenges facing groups and individuals active in advocating for the protection of forests are threats posed by those, often private sector, groups whose interest would be threatened by better governance of forests. To support these groups *KEMITRAAN* began implementing a program called Human Rights Defenders in 2019. The passage of important new pieces of legislation during 2020 notably the Laws on Job Creation and Coal and Mineral Mining are both seen as reducing the capacity for citizens groups to be involved in raising issues with regards

to proposed business activities that impact upon the environment, both underscore the importance of determined efforts to support the work of those working to defend the rights of people whose livelihoods and communities are dependent directly on forests and other natural environments. During 2020 *KEMITRAAN* in partnership with several leading civil society organisations including working with relevant ministries, produced a draft revision to the Law on Forestry with a focus on including human rights into its associated academic treatise, established a review of the National Human Rights Commission Regulation on Protection of Human Rights Defenders, developed a Protocol on Journalist Protection and initiated expert discussion to provide substantial inputs on the existing Draft Ministerial Regulation of Ministry of Environment and Forestry on Anti-Strategic Lawsuit Against Public Participation. At the sub-national level *KEMITRAAN*'s program collaborated with local organisations to produce eight drafts of Community-Based Protection Mechanisms in regions across five provinces. Our program also produced eight drafts of Standard Operating Procedures for Organization-based protection mechanism to better safeguard their rights in continuing their work as HRDs in the field.



 The atmosphere of discussion in the field with environmental defenders.

Peatlands

Beyond supporting work on supporting and protecting those engaged in the front lines of efforts to protect the environment and the communities dependent directly upon the environment, *KEMITRAAN* has continued to advance its important programs focused on restoring peatlands. In this regard we work very closely with the Peatlands Restoration Agency, BRG, as the national agency mandated to lead national efforts to restore millions of hectares of degraded peatlands across Indonesia.

Over the past three years, *KEMITRAAN*'s program of engagement through the national Caring for Peatland Village Program built 50 canal blockings and 252 boreholes/drilling wells to wet 4,447 hectares of peatland and 25,760 hectares of forest areas that are protected through social forestry schemes in 78 village communities. In addition 37 villages in six provinces have enacted village regulations on village annual plans (RKPDs 2020) related to peat restoration, while 27 villages in five provinces have moved forward to enact regulations on peat restoration (PPEG).

In addition to providing engineering support to restore these peatlands and support communities develop effective regulations to govern these restored peatlands *KEMITRAAN* has also worked with these communities to empower them

to increase capacity and value (production incl. added value & diversification, branding, management, marketing) on enterprises/ business development related to peatland based/ related commodities/products. In this regard we supported 71 community enterprises (KUBE, Koperasi, Pokmas) and 44 BUMDes in 101 villages participating in the Caring for Peatland Village Program. By end of 2020, the total sales received by active community enterprises reached IDR 840 million producing healthy net profits of IDR 190 million.

Of the 259 villages that had been intensively assisted by our program, 106 villages have made use of the results of participatory mapping as the basis for village development planning by integrating their effort of peatland restoration. Furthermore four villages in South Sumatera, Jambi, West Kalimantan, Central Kalimantan have developed piloting for Community based Fires Management and Fires (Disaster) Resilient Villages. Meanwhile 68 villages have increased understanding on climate change and fires disasters through the strengthening of village policies and planning.



Capacity building for peatland based products to increase community welfares.



Drilling wells on peatlands, for extinguishing land fires by community



Activities of villagers when taking sago from the tree for their food

To advance the development of paludiculture (agriculture of peatlands) in 2020, *KEMITRAAN* and its partners finalised an assessment on value chain and cost benefit analysis for selected paludiculture crops (Sagoe, Jelutung, Gemor, and Purun) in Kepulauan Meranti District (Riau Province) and Kapuas District (Central Kalimantan Province). The mapping for current and potential area of Sago for these two project areas have also been completed. This analysis has been incorporated by the local government of Kepulauan Meranti in Riau Province for their

midterm strategic intervention. Some of the learning of this approach has more recently been deployed in new areas, notably through a scoping mission in Kabupaten Mappi in Papua Province and Kabupaten Sorong Selatan in Papua Barat Province with a focus on the possibilities of sago. Should production take place this would certainly support the communities in these peatland communities to secure economic livelihoods and income.



Multi-stakeholder meeting on the process of proposing a social forestry scheme based on forest food management, in Saddang-South Sulawesi

Customary communities and social forestry

Another important national development that brings together forest governance with the rights of forest dependent communities is the long term struggle for the recognition of rights of customary communities. Since the historic Constitutional Court Verdict in 2013 affirming the rights of customary communities to their ancestral forests, it has been a long term struggle on a case by case basis across the archipelago to support these communities secure these rights.

KEMITRAAN's engagement in supporting these communities is through the Social Inclusion Programme known as Peduli. With 2020 being the final year of this program, we are pleased to record some of the key achievements of this program.

At the international level, KEMITRAAN has voiced its concern on issues of social exclusion mainly related to indigenous people in various international forums.

At the national level, KEMITRAAN led a CSO coalition in a policy advocacy effort to mainstream social inclusion, especially for vulnerable and marginalized children, in the 2019-2024 National Mid-term Development Planning Document (RPJMN). This also entailed advocating in collaboration with ministries / agencies on the issues of indigenous people, culture, and vulnerable and marginalized children to be mainstreamed in government work programs.

In terms of connections and partnering *KEMITRAAN* reached almost 22,000 people through various means, projects and engagements.

Through the program we were able to support 2,356 people improve their skills to become activists in each program location. We supported 3,499 people secure civil registry identities that now enable them to access various key state supported social and other services. We supported some 159 public service units to improve their service delivery capacity. We supported some 15,424 people secure their rights to access to social assistance and basic services. Through our work with local communities they were able to effectively advocate for the allocation of local budgetary resources to the value of over Rp 43 billion.

Over the past eight years *KEMITRAAN* has been a leading proponent supporting the implementation of Social Forestry designation for lands associated with various local communities.

To the end of 2020 *KEMITRAAN* and its partners in the regions have supported the application of social forestry permits covering more than 850,000 hectares in 12 provinces. The program continued to support 170,000 hectares in 3 provinces (East and West Nusa Tenggara and South Sulawesi). This figure represents approximately 20% of all social forestry lands designated across the whole of Indonesia.



Routine meetings of environmental activists supported by *KEMITRAAN*



Utilization of forest products in social forestry areas in South Sulawesi



Local community in East Nusa Tenggara in social forestry area



Climate change adaptation and reducing greenhouse gas emissions


Following endorsement as a National Implementing Entity (NIE) to the UNFCC's Adaptation Fund in 2019, KEMITRAAN put together the Community Adaptation for Forest-Food based Management in Saddang Watershed Ecosystem program. Endorsement was secured during 2020 with working beginning as the year came to a close. The program will encourage community adaptation in the watershed area to enhance the development of forest food and food diversification that will provide alternative access to livelihood adaptation of farmers by utilizing forest areas through Social Forestry scheme along the Saddang River system.

In late 2020 we were also successful in securing approval support for two further projects. The first project is the Safekeeping-Surviving-Sustaining

towards Resilience: 3S Approach to Build Coastal City Resilience to Climate Change Impacts and Natural Disasters in Pekalongan City, Central Java Province". This project builds upon an earlier initiative in climate change resilience with communities in this city. The second project is "Adapting to Climate Change through Sustainable Integrated Watershed Governance in Indigenous People of Ammatoa Kajang Customary Area in Bulukumba Regency, South Sulawesi Province, Indonesia". This builds upon other KEMITRAAN work in the field of supporting customary communities.

In support of the government target of reducing greenhouse gas emissions by 43% with international support, KEMITRAAN has been working with Bappenas in support of its



 Capacity buildings for facilitators for community adaptation of Saddang watershed ecosystem based on forest food management

Low Carbon Development Indonesia initiative. *KEMITRAAN's* focus has been to push for a single-reference of a nationally-wide agreed and accepted emission reduction target. This can only be achieved through improved policy coordination amongst key stakeholders. This also entails trying to develop an approach that is not over-regulated and thus excessively difficult to apply. To advance the agenda we launched a gap analysis of existing relevant policies and recommendation of priority issues. The same analysis will also look at policy arrangements to see which accelerate or alternatively hinder implementation. Additionally, *KEMITRAAN* had conducted a series of stakeholder discussions as an approach to harmonize and coordinate policies.

Local government support in Western Papua and beyond

KEMITRAAN has managed a range of initiatives in support of local authorities in Bintuni Gulf and Fakfak in the Province of Western Papua. Our program in 2020 supported the application of one stop shops to enhance service delivery. Another focus has been on supporting the local authorities make better use, through policy reforms, of oil and gas royalties that these regions are able to collect. To support village level planning activities *KEMITRAAN* supported local efforts to update social and economic data to ensure a more informed considerations for this planning work.



 Efforts to updating social and economic data in Papua



03

Securing Democratic
and Civil Rights



The use, or more specifically abuse, of modern digital platforms of social media by creating and distributing hate fueled language that is super charged in impact and reach through various means, has not surprisingly led to various moral panics and calls for action to contain the impact of these new platforms for spreading hate speech.

INDONESIA HAS NOT BEEN FULLY IMMUNE to the current threats to democratic systems that have been evident in so many transitional and even well-established democracies. The three sources of threat most evident in 2020 were a combination of the digital technology, an epidemic and a resurgence of autocracy. The use, or more specifically abuse, of modern digital platforms of social media by creating and distributing hate fueled language that is super charged in impact and reach through various means, has not surprisingly led to various moral panics and calls for action to contain the impact of these new platforms for spreading hate speech. These developments are also creating blurred lines between accountable news and so-called fake news and personal opinion/ ideology versus scientific evidence. Confronting these very 21st century challenges to protecting hard won advances in protecting free speech while at the same seeking to contain the very deleterious impacts of re-enforced of 24 hour a day dissemination of hate and conspiracies is a challenge to democracies across the world. Non-democracies can of course severely censor the internet. Even so they too face the challenges presented as so much of their own economies are dependent upon a functional internet including access to the very digital economy platforms that are being abused.

This accumulated capacity to project parallel reality and falsehoods has had a serious impact on efforts in many nations to contact in the

impact of the COVID-19 crisis. A seemingly “easy” solution to the problem of issue of the spread of false and dangerous misinformation regarding management of the epidemic is to “censor”, shut down or criminalise those deemed responsible for creating or even sharing these falsehoods and misinformation. The necessary restrictions on physical engagements and meetings during this year has also had the impact of reducing the capacity for people to engage directly with elected officials for legitimate exchanges and advocacy.

These challenges have also encouraged the rise of “tough guy leaders”. They invariably present themselves as the antidote to public angst about a lack of security and certainty amid the rapid changes in society and often exacerbated by hyper-partisan channels of media that many people absorb. These tough guy leaders, and thus far all such national leaders are indeed men, project a kind of toxic machismo, often presenting critics and political opponents as enemies and threats to the nation. They seek to equate their own interests as equal to that of the state and nation, a classic play by would-be dictators throughout history. These problems have not just affected transitional democracies but have become quite evident even in very established democracies.



Multistakeholders discussion

These developments should be read as a clarion call among supporters of democratic governance for closer cooperation and exchange and mutual learning. It is clear that no country is now immune to these threats to the integrity of their democratic constitutional order.

In Indonesia efforts to re-invigorate the use of antiquated *Lèse-majesté* type criminal articles and the increasingly frequent use over the past decade of rubbery blasphemy and electronic transaction laws reflect efforts aimed at cutting further the status of civil liberties of the citizenry including to hold elected officials to account and criticism. While we note that these new digital communications technologies are open to abuse,

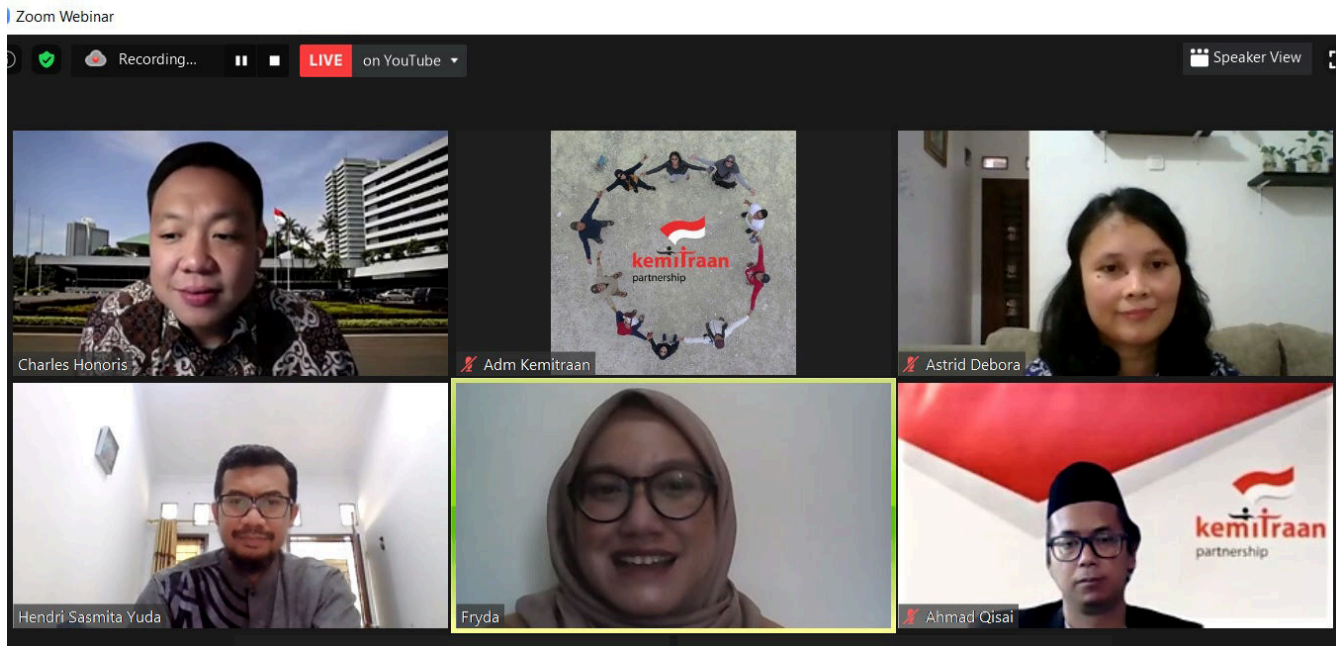
it is also extremely important to note that these same technologies have also been applied for the greater good. Our collective challenge therefore is to find ways to address the negative aspects while protecting and indeed advancing the capacity for the people to make productive and use of these technologies to support their livelihoods and defend their interests as citizens.

Despite these challenges KEMITRAAN and its networks of partners were able to make some progress in securing the democratic and civil rights of the people.



Focussed Group Discussion activities to advocate human right defenders in environmental sector





One of the PARTNERSHIP efforts in strengthening the personal data protection in Indonesia

Rights and public sector reform

KEMITRAAN has been an active and supportive advocate for the introduction of a Personal Data Protection Law as a valuable tool for people to better protect themselves from predatory use of personal data for commercial and other purposes. By late 2020 the Parliament had processed the draft law through to advanced deliberations. Through our advocacy work we were able to convince the Parliament to include in the proposed law the establishment of a new independent Personal Data Protection Authority to supervise compliance with the law. With its expected passage in 2021, Indonesia will join a growing number of mostly developed nations that have established these personal data protection platforms.

Through KEMITRAAN's INSPIRE program we were able to work with members of each parliamentary faction to advocate for this draft. At the same time we have been able to build upon the networks fashioned across factions and with partners from various regions of Indonesia to advocate for a number of issues contained in SDG Goal 16 regarding peace, justice and strong institutions. In addition to the issue of personal data protection, we have also been able to promote efforts in areas such as ensuring public access to information and protect fundamental freedoms, promoting electoral reform with a focus on inclusive representation, ensuring responsive, inclusive, participatory and representative decision-making at all levels. In addition we also focused on reducing significantly illicit financial and arms flows, strengthening the recovery and



LAODE M. SYARIF YASIR SANI
 Dir. Eksekutif Kemitraan Program Peduli, Kemitraan
WARIKI SUTIKNO VIOLA REININDA
 Dir. Politik dan Komunikasi Kemen.PPN/BAPPENAS Peneliti KODE Inisiatif
PUTERI A. KOMARUDIN DESIANA SAMOSIR
 Anggota DPR RI F-Colkar Program INSPIRE, Kemitraan
BEKA ULUNG HAPSARA
 Komisiner Komnas HAM



return of stolen assets and combatting all forms of organized crime as part of efforts to end abuse, exploitation, trafficking and all forms of violence against and torture of children as well as human trafficking in general. Through a series of webinars we were able to engage with almost 800 people including elected MPs, civil society activists, academicians, women, youth, customary communities and the disabled community. We also conducted a series of engagement dialogues connecting over 1,050 civil society, media and academics and elected MPs to discuss matters such as electronic evidence management in corruption cases, legal aid for vulnerable political candidates, options for affirmative financing and political education for women candidates. On the issue of electronic evidence handling, *KEMITRAAN* carried forward work from an earlier program to partner again with the KPK and Bappenas to advocate for strengthening the regulations governing the handling of electronic evidence to ensure its admissibility from investigation and prosecution through to trials. To enhance the capacity of local communities to better monitor the implementation of key components of SDG 16, *KEMITRAAN* has piloted a new app in a number of cities and at select provincial levels. The results of the monitoring were shared with various stakeholders including the National Development Planning Agency and the National SDG Secretariat.

Together with our partners *KEMITRAAN* launched information campaign focused on other key issues related to SDG 16 including countering violent extremism as well as re-affirming other issues already discussed above. This includes dialogue and exchanges focused on countering digitally promoted violent extremism and social exclusivism/supremacism.

On the issues of gender and inclusion the INSPIRE program has focused its policy advocacy proposals on strengthening the role of women, youth, customary communities and people with disability in politics. We have proposed changes to the existing legislation to reflect affirmative and inclusive perspectives in political representation. To support advance these efforts we have engaged with almost 5,000 people including 44% women.

One additional initiative that has been important for *KEMITRAAN* and its partners during 2020 was to advocate for the passing of the Draft Law on Eradicating Sexual Violence. Key target objectives are to protect women from sexual violence and to effectively ban child marriages. To further advance these efforts *KEMITRAAN* has worked closely with the national Ministry of Women Empowerment and Child Protection and reform-oriented politicians from various political parties. While there remains opposition to this law from socially conservative MPs, we are quietly confident that a draft law will be deliberated by the Parliament during this term.





04

Knowledge
Management



THE KNOWLEDGE MANAGEMENT AND LEARNING UNIT

, the KMLU, launched its latest Police Governance Index, ITK, in 2020. This latest index takes a deep dive geographically reviewing the status of governance in police precincts across 461 regions of the country. Adapting to the realities of COVID-19 restrictions, the survey work to create this index included some 300,000 online pieces of information.

The 2020 ITK builds upon several earlier ITK that focused on various divisions and specialized agencies under the Police. The kinds of metrics covered by the Police Governance Index include competence, responsiveness, behaviour, transparency, justice, Effectiveness and accountability.

Over the past five years, since the ITK was first created, *KEMITRAAN* has forged a close partnership with the Police, Polri. The objective has been that the results of the ITK are able to support reforms and improvements in the quality of policing in Indonesia. In this regard we are very pleased that successive Chiefs of Police have endorsed and supported the ITK and have incorporated the findings into their internal management systems. Polri is now a key contributor to the budget of producing the ITK thus demonstrating further the value that leading officers in Polri attach to this work.

KEMITRAAN's success in creating, developing and managing the ITK is beginning to bear fruit in other areas. In July 2020, following an initial invitation in late 2019 from the Minister of Home Affairs to discuss the idea of strengthening the effectiveness of its own local governance metrics, *KEMITRAAN* signed an MoU with the Ministry that will build upon *KEMITRAAN*'s established Indonesia Governance Index methodology to support strengthen the Ministry conduct its regular Evaluation of Local Government

Implementation;

In other work the KMLU was active in producing and releasing a wide range of publications that also take advantage of be technologies to amplify reach and with reduced publication costs. During the year we were able to variously produce and launch:

- ◆ seven policy briefs;
- ◆ one policy paper;
- ◆ seven good practices publications;
- ◆ 14 news articles published by members of our staff;
- ◆ One article published in an internationally recognised journal;
- ◆ Seven videos;
- ◆ Six podcasts;
- ◆ 19 other publications.

More details on each of these publications can be found at Annex 6.

In support of strengthening internal management capacity and enhancing further *KEMITRAAN*'s program and project management capacities, the KMLU continues to develop its TRACY system. This is an online platform for program and project management and tracking that *KEMITRAAN* have been developing and fining over the past few years.

The strength and reach of the TRACY system has really come into its own as a tool to support *KEMITRAAN* in management given the special complexities presented by the pandemic in 2020. It has helped enable better tracking of changes in the modalities of program and project delivery. It has also better enabled us to capture reports and feedback on the status of delivery that have been necessitated due to the need to adapt to the circumstances of 2020.



05

Human Resources, Office and Financial Management



Human resources and contracting

At the end of 2020, KEMITRAAN the full staffing contingent was 129 persons. Despite the extraordinary instability affecting so much of the economy staffing turnover was relatively modest with eight departures and 18 new recruits together with two further short term recruits who began and concluded their work with KEMITRAAN during the year.

A full list of staff, including movements, during the year can be seen as Annex 2.

During the year the contracts office managed 149 purchase orders involving some 100 vendors. The office also issued four contract grants. The human resources office issued 15 professional service contracts.



Summary of programs and projects

During 2020 KEMITRAAN managed a network of programs and on-grant arrangements with 32 different partners. These partners were located in 19 different cities and districts spread across all the main islands of Indonesia covering Sumatra, Java, Kalimantan, Sulawesi and Papua. Details on each project and partner arrangement can be found at Annex 4. Details on the funding arrangements with each project partner, including disbursements can be seen as Annex 5.

In April 2020 the Executive Board determined, that given the unforeseen and negative impact that the COVID-19 crisis would have on the capacity of KEMITRAAN to deliver its program work as initially scheduled would need to be revised back. The Executive Board agreed to accept a 50% delivery rate. By the end of the year, due significantly to reforms undertaken to support program delivery through enhanced use of online platforms, KEMITRAAN was able to achieve a delivery rate of 69%.

Total initial commitments scheduled for delivery at the start of 2020 was USD 7.5 million. By the end of the Year some USD 5.19 million, or 69%, was expended.

In the light of the impact of COVID-19 KEMITRAAN reviewed a number of standard operating procedures to enable new ways of operating in the environment. Much of this related to making better and more intense use of online platforms. The existence of KEMITRAAN's TRACY system has shown to be a powerful and valuable tool for management and program and project tracking and oversight. During the year TRACY's coverage of all KEMITRAAN activities rose from 77% in 2019 to 89% in 2020.



Resources

During 2020 *KEMITRAAN* was able to secure total funding from our donor partners to the value of USD 4,439,727. In the 20 years since *KEMITRAAN* was established the total value of resources mobilised has reached USD 167,323,316. A full list of all our donor partners over these years can be seen at Annex 3.

KEMITRAAN's internal resource base at the start of 2020 was valued at USD 934,000. At the end of 2020 it was valued at USD 730,000. Of this figure some USD 364,000 is secured in the case of emergency need based upon actuarial prudence. This means that *KEMITRAAN* concluded 2020 with a secure financial balance.



Audits, assessments and accreditation

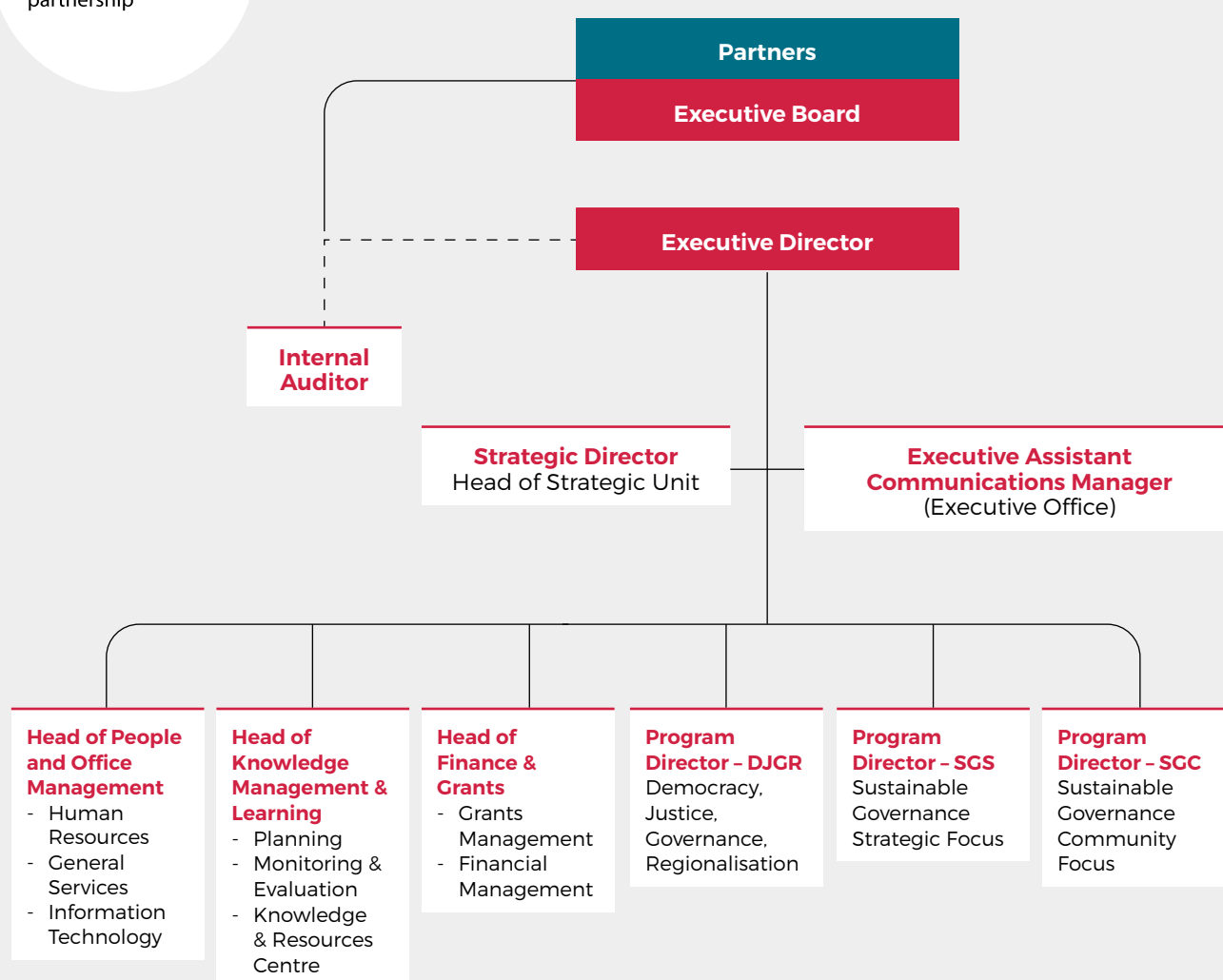
During 2020 *Kemitraan* expanded its base of international accreditation. In 2019 *KEMITRAAN* became the first National Implementing Entity (NIE) to secure accreditation from the UNFCCC. In 2020 *Kemitraan* secured certification as a National Accredited Agency to the Green Climate Fund.

During 2020 *KEMITRAAN* was also accepted for inclusion by the Think Tanks and Civil Societies Programs' annual Think Tank Index. This prestigious measurement identifies leading institutions of influence across the world along a number of metrics, including extent of influence and community impact.

During the year *KEMITRAAN* and a number of its programs were audited. This included the BLU-REDD+ and BBE programs. Both audits secured Unqualified Opinions. Two end of project audits conducted for Peduli and the DPG Program were currently underway at the close of the year.

KEMITRAAN also underwent an audit of its ISO 9001 from 2015-2020 with the results being that there were no findings, or a Clean Score.

Annex 1: Our Organisation Chart



Annex 2 : Our People 2020

THE PARTNERS

1	Director of the School of Graduate Studies at Syarif Hidayatullah State Islamic University	Azyumardi Azra
2	Founder of Kiroyan Partners	Noke Kiroyan
3	Governor of Central Kalimantan Province (2005 – 2015)	Agustin Teras Narang
4	NGO Activist	Agus Rumansara
5	Senior Journalist at the Jakarta Post	Endy M. Bayuni
6	LProfessor of Law at University of Indonesia	Hikmahanto Juwana
7	Member of Parliament (2014 – 2019), Minister of Manpower (2019 – current)	Ida Fauziah
8	Member of Parliament (2019 – 2024)	Nurul Arifin
9	Chairperson of the Steering Committee of the Tropical Landscapes Finance Facility	Kuntoro Mangkusubroto
10	Head of Batam BP (Badan Pengusahaan)	Lukita Dinarsyah Tuwo
11	Head of Presidium for Balai Syura Ureung Inong Aceh	Nursiti
12	Deputy Head of the 2018 Indonesia Asian Para Games Organizing Committee	Sylviana Murni
13	Member of Board of Commissioner at PT Pegadaian (Persero)	Yopie Hidayat

THE PARTNERS WHO ARE ALSO THE EXECUTIVE BOARD

1	Board of Director of the Indonesia Eximbank	Felia Salim
2	Governor of the National Defense Agency (Lemhanas) & Senior Fellow CSIS & Board of Advisors, Institute for Peace and Democracy	Agus Widjojo
3	Member of the Regional Representatives Council/ DPD	Farouk Muhammad
4	Member of Parliament (2014 – 2019)	Eva Kusuma Sundari
5	Archbishop of Kupang Archdiocese, East Nusa Tenggara	Petrus Turang
6	Senior Lecturer and Head of Department of Political Science at University of Indonesia	Valina Singka Subekti

EXECUTIVE OFFICE

1	Executive Director	Laode Muhammad Syarif (joined Jan)
2	Internal Auditor	Stevanezar Adi Kirana
3	Executive Assistant	Hindijani Novita
4	Communication Assistant	Ayu Prahadini – (departed Mar)
5	Consultant for Program Development	Kevin Evans

PEOPLE & OFFICE MANAGEMENT

1	Head of People & Office Management	Heny Pratiwi
2	HR Officer	Edityas Nur Hutami
3	Receptionist & Admin	Citra Oktaviani
4	SOP - Reviewer	Renault
5	HR - Consultant	Widura Imam
6	Legal Advisor - Consultant	Karolina S.H
7	Human Resources - Consultant	Mustika Yundari
8	Admin Assistant - Consultant	Fauzia Fadila
9	GS & Procurement Officer	Titik Wahyuningsih
10	IT Officer	Iwan Samsul
11	Office Helper 1	Fajri Salim
12	Office Helper 2	Mei Utomo
13	Photocopy Machine Operator	Muzakir
14	Security	Watono

FINANCE & GRANTS

1	Head of Finance & Grants	Budi Setiawan
2	Grant Manager	Noviani Dewi Utami
3	Finance Officer	Jumali
4	Junior Finance Officer	Isnawati Dewan
5	Finance Assistant	Kurniasih Paturrahman
6	Finance Assistant	Rina Bahar
7	Finance Assistant (Consultant)	Muhammad Afif Abdillah

KNOWLEDGE MANAGEMENT & LEARNING

1	Head of Knowledge Management & Learning	Inda Presanti Loekman
2	Knowledge and Communication Officer	Arif Nurdiansah
3	Research Specialist	IG Sigit Murwito
4	Finance & Admin Assistant	Amalia Fubani
5	Librarian	Riana Ekawati
6	Research & Admin Support	Hana Alfahani Syafrilla
7	Knowledge Management Learning Junior Officer	Muki Trenggono Wicaksono
8	Consultant - Principal Researcher	Lenny Hidayat
9	Consultant - Researcher	Hery Sulistyo Jati
10	Consultant - Knowledge Management Learning	Irfan Nasrullah
11	Monitoring Evaluation Officer	Moch Ghufro
12	Monitoring Evaluation Learning Specialist	Marselino Djeer
13	Monitoring Evaluation Assistant	Rr. Aj. Chandra Purnamasari

SUSTAINABLE GOVERNANCE STRATEGIC

1	Program Director for Sustainable Governance Strategic	Dewi Lestari Yani Rizki
2	Deputy Chief of Party / Program Manager BIJAK	Ridaya Laodengkowe (departed Sep)
3	Deputy Chief of Party / Program Manager BIJAK	Chitra Retna Septriyandica (joined Sep)
4	Project Officer CLUA LED	Irfan Nurhadi (joined Mar)
5	Data Specialist -Consultant	Irendra Radjawali
6	Communication Specialist - Consultant	Gampang Sahl Wahono
7	Project Manager for CLUA LED	Abimanyu Aji Sasongko
8	Project Assistant for SGS	Adetya Rahmi
9	Project Manager for Peduli	Yasir Sani
10	Grant Officer for Peduli	Efrizal Zein (departed Oct)
11	Finance Officer for PNPM Peduli	Wahyu Pamuji
12	Communication Specialist and Project Officer	Asriyadi Alexander (departed Mar)
13	Project Officer-Peduli	Rinto Andhi Suncoko (joined May departed Oct)
14	Project Officer-Peduli	Widya Anggraini
15	Project Assistant for SGC	Ina Desilia Fridayanti
16	Consultant - Coordinator of Emergency Response	Edith Koesoemawira (departed Aug)
17	Junior Consultant for RPJMN	Arnold Andreas Nababan
18	Project Admin Assistant SBU	Pedro Horas Arzuniady Sirait
19	Field Coordinator SBU	Moh. Bustom
20	Project Officer Landskap	Dedi Hariri
21	Project Assistant CBFM	Ribka Pauline Bukit
22	Technical Assistant - Consultant	Yudha Utama
23	RPJM Anak - Consultant for Peduli	Tracy Yohana Pasaribu (joined Apr)
24	Project Officer - Consultant	Lensi Rianis Jais
25	Technical Assistant CMEA - Consultant	M. Haykal Ardhanikusumah
26	Junior Communication - Consultant for Peduli	Shabrina P.P

SUSTAINABLE GOVERNANCE COMMUNITY

1	Program Director for Sustainable Governance Community	Hasbi Berliani
2	Project Manager for DPG	Yesaya Hardiyanto
3	Project Manager for CBFM	Gladi Hardiyanto
4	Liaison Officer	Suwito
5	Communication Specialist - Consultant	Krisnadi Yuliawan Saptadi
6	Knowledge Management DPG - Consultant	Hasantoha Adnan Syahputra
7	Communication - Consultant	Indrawardhani Girivati Pringgogigdo (Kili)
8	Media Engagement - Consultant	Stella Yovita Arya Puteri (joined Jul)
9	Project Officer for DPG (Kalimantan, Papua)	Sudarwan (joined Apr)
10	Finance & Grant Officer for DPG	Yunidar

11	Project Assistant for CBFM	Fajarwati
12	Provincial Coordinator for DPG in South Sumatera	Amir Faisal
13	Field Supervisor for DPG in Jambi	Hermansyah Sormin
14	Field Supervisor for DPG in South Kalimantan	Garuda Parampara Yuda (joined Apr)
15	Field Supervisor for DPG in Riau	Harry Kurniawan (joined Apr)
16	Field Supervisor for DPG in Central Kalimantan	Intan
17	Field Supervisor for DPG in Central Kalimantan	Agus Triawan (joined Apr)
18	Field Supervisor for DPG in Central Kalimantan	Paulus Bernataly Rasa
19	Project Officer for DPG (Jambi, Riau, South Sumatera)	Ridha Yuanita Sutomo (joined Mar)
20	Project Officer for DPG (Jambi, Riau, South Sumatera)	Hambali (joined Jan departed Mar)
21	Finance & Admin Assistant for DPG	Samiasi
22	Finance & Admin Assistant for DPG in South Sumatera	Rudiyanto Hia
23	Finance & Admin Assistant for DPG in Jambi	Novita Sari
24	Finance & Admin Assistant for DPG in Riau	Linda Veronika
25	Finance & Admin Assistant for DPG South Kalimantan	Illa Marlina
26	Finance & Admin Assistant for DPG West Kalimantan	Mutia Maduri
27	Provincial Coordinator for DPG in Central Kalimantan	Andi Kiki
28	Project Officer for DPG	Binsar Liem Sihotang (departed Sep)
29	Finance & Admin Assistant for Central Kalimantan	Ari Kristiani
30	Field Supervisor for DPG in South Sumatera	Iswandi Gunata Astori (departed Mar)
31	Finance & Admin Assistant for DPG in Papua	Hermin Tandiboro (joined May)
32	Field Supervisor for DPG in Papua	Fourly Latul
33	Field Supervisor for DPG in West Kalimantan	Elni Kohar
34	Village Capacity Building Specialist – Consultant	Oka I Nyoman
35	Social and Gender Integration Plan Specialist – Consultant	Catharina Indirastuti
36	Admin Assistant PMU Jakarta – Consultant	Baiq Wardhiana
37	Technical Assistant for DPG – Consultant	Deni Darmawan
38	Peatland Communities Sustainable Livelihood Specialist in West Kalimantan – Consultant	Sri Ranti
39	Economic Empowerment & Sustainable Livelihood Specialist – Consultant	Wisnu Caroko
40	Technical Assistant DPG -Consultant	Fika Triandini (departed Nov)
41	Petugas Keamanan / Office Boy Sumsel - Consultant	Arifin
42	Petugas Keamanan / Office Boy Kalteng - Consultant	Sutomo
43	Technical Assistant - Consultant	Suci Maisyaroh
44	Data dan Information Officer - Consultant	M. Ichwan Hidayatullah
45	Barista Trade Café - Consultant	Muhammad Irsyad
46	TA PCSL Sumsel - Consultant	Henni Martini
47	Forest Governance - Consultant	Joko Waluyo
48	Petugas Keamanan / Office Boy Jambi	Muhammad Padli
49	Office Girl Kalbar	Dahlia Rosa

DEMOCRATIC JUSTICE GOVERNANCE & REGIONALISATION

1	Program Director for Democratic Justice Governance	Ahmad Qisai
2	Team Leader for Human Rights Defender	Ririn Sefsani
3	Monitoring Evaluation Knowledge Officer	Heksa Sari Julianti
4	Project Officer for HRD	Julio Castor Achmadi
5	Communication Officer	Sutrisno Budiharto
6	Finance and Admin Officer	Sri Lestari (joined Apr)
7	Project Manager for INSPIRE	Desiana Samosir (Joined Feb)
8	National Expert on HRD Protection Mechanism - Consultant	Swandaru
9	Gender Specialist – Consultant	Elisabeth AS Dewi
10	Akses Informasi dan Pelindungan Data Pribadi - Consultant INSPIRE	Henri Subagyo (joined May)
11	Akses Informasi dan Pelindungan Data Pribadi - Consultant INSPIRE	Astrid Debora (joined May)
12	Asisten Yuniior untuk Monitoring Media dan Advokasi SDG's 16 - Consultant INSPIRE	Fryda Agustin Nurazizah (joined Jun)
13	Keuangan Parpol - Consultant INSPIRE	Hurriyah (joined Jun)
14	Keuangan Parpol - Consultant INSPIRE	August Mellaz (joined Jun)
15	Keuangan Parpol - Consultant INSPIRE	Veri Junaidi (joined Jun)



Annex 3 : Our Donor Partners

No	Donors	Donor Contribution 2000-2019	2020	Donor Contribution 2000-2020	%
1	Government of Netherlands	\$ 38,997,073	\$ 402,576	\$39,399,649	23%
2	Government of Norway	\$21,241,006	\$ 66,490	\$ 21,307,497	13%
3	Government of Australia	\$ 15,257,688	\$ -	\$ 15,257,688	9%
4	European Union	\$12,807,037	\$ -	\$12,807,037	8%
5	Government of United Kingdom	\$ 8,464,273	\$ -	\$ 8,464,273	5%
6	Government of Sweden	\$ 7,353,799	\$ -	\$ 7,353,799	4%
7	United Nations Office for Project Services	\$ 5,376,527	\$ 1,890,871	\$ 7,267,398	4%
8	World Bank (IBRD)	\$ 6,113,655	\$ -	\$ 6,113,655	4%
9	Government of United States of America	\$ 5,736,013	\$ -	\$ 5,736,013	3%
10	Asia Foundation	\$ 4,171,297	\$ 313,524	\$ 4,484,821	3%
11	Government of Japan	\$ 4,084,312	\$ -	\$ 4,084,312	2%
12	Government of Denmark	\$ 4,023,265	\$ -	\$ 4,023,265	2%
13	CLUA	\$ 2,519,322	\$ -	\$ 2,519,322	2%
14	RTI International	\$ 2,106,173	\$ -	\$ 2,106,173	1%
15	UNDP	\$ 2,015,139	\$ -	\$ 2,015,139	1%
16	Ford Foundation	\$ 1,834,384	\$ 98,059	\$ 1,932,443	1%
17	Government of New Zealand	\$ 1,874,005	\$ -	\$ 1,874,005	1%
18	Chemonics International Inc.	\$ 1,218,938	\$ 250,301	\$ 1,469,239	1%
19	SIEMENS	\$ 1,311,266	\$ -	\$ 1,311,266	1%
20	IDLO - International Development Law Organization	\$ 1,228,109	\$ -	\$ 1,228,109	1%
21	MCAI - Millenium Challenge Account Indonesia	\$ 1,143,920	\$ -	\$ 1,143,920	1%
22	BP Berau Ltd.	\$ 923,452	\$ 199,006	\$ 1,112,458	1%
23	UN ODC	\$ 902,130	\$ -	\$ 902,130	1%
24	The David and Lucile Packard Foundation	\$ 849,000	\$ -	\$ 849,000	1%
25	Genting Oil Kasuri Pte. Ltd.	\$ 795,612	\$ -	\$ 795,612	0%
26	Oxford Policy Management Asia	\$ 780,692	\$ -	\$ 780,692	0%
27	Adaptation Funds	\$ 60,000	\$ 674,826	\$ 734,826	0%
28	IDH The Sustainable Trade Initiative	\$ 642,999	\$ -	\$ 642,999	0%
29	Government of Canada	\$ 628,990	\$ -	\$ 628,990	0%
30	Cardno Emerging Markets (Australia) Pty Ltd	\$ 620,377	\$ -	\$ 620,377	0%
31	Government of Finland	\$ 597,812	\$ -	\$ 597,812	0%
32	NIMD - The Netherlands Institute for Multiparty Democracy	\$ 257,407	\$ 338,829	\$ 596,235	0%
33	University of Colorado	\$ 537,187	\$ -	\$ 537,187	0%
34	NDI - National Democratic Institute	\$ 371,814	\$ -	\$ 371,814	0%
35	Rockefeller Philanthropy Advisor, Inc.	\$ 347,000	\$ -	\$ 347,000	0%
36	Axis	\$ 343,696	\$ -	\$ 343,696	0%

No	Donors	Donor Contribution 2000-2019	2020	Donor Contribution 2000-2020	%
37	MSI - Management System International	\$ 284,409	\$ -	\$ 284,409	0%
38	Bosch Foundation	\$ 192,227	\$ -	\$ 192,227	0%
39	Government of Indonesia	\$ 89,286	\$ 87,865	\$ 177,151	0%
40	Government of Switzerland	\$ 139,285	\$ -	\$ 139,285	0%
41	Outright Action International	\$ 120,015	\$ -	\$ 120,015	0%
42	UNEP	\$ 111,870	\$ -	\$ 111,870	0%
43	Good Energies Foundation	\$ 97,372	\$ -	\$ 97,372	0%
44	Government of Spain	\$ 83,343	\$ -	\$ 83,343	0%
45	BSR - Business for Social Responsibility	\$ 72,171	\$ -	\$ 72,171	0%
46	The Samdhana Institute	\$ 63,808	\$ -	\$ 63,808	0%
47	IOM	\$ 49,624	\$ -	\$ 49,624	0%
48	Government of France	\$ 49,062	\$ -	\$ 49,062	0%
49	LTKL - Lembaga Temu Kabupaten Lestari	\$ 47,629	\$ -	\$ 47,629	0%
50	PT EOS Consultants	\$ -	\$ 43,885	\$ 43,885	0%
51	Cowater International Inc.	\$ 39,923	\$ -	\$ 39,923	0%
52	TII Transparancy International Indonesia	\$ 38,053	\$ -	\$ 38,053	0%
53	University of Sydney	\$ 37,582	\$ -	\$ 37,582	0%
54	KOMPAK - Kolaborasi Masyarakat dan Pelayanan	\$ -	\$ 24,925	\$ 24,925	0%
55	Woods and Wayside International	\$ 24,876	\$ -	\$ 24,876	0%
56	AUAF - American University of Afghanistan	\$ 20,000	\$ -	\$ 20,000	0%
57	British Embassy	\$ 13,193	\$ 0	\$ 13,193	0%
58	UNESCAP	\$ 9,143	\$ -	\$ 9,143	0%
59	Government of Korea	\$ 2,190	\$ -	\$ 2,190	0%
60	Internal Funds	\$ 3,763,159	\$ 437,776	\$ 4,200,935	3%
TOTAL DONOR CONTRIBUTIONS		\$ 162,883,589	\$ 4,828,953	\$ 167,712,542	100%

Annex 4 : Our Programme and Projects Partners in 2020

Program Name	Donor	Grantee Name	Location	Project Title
Emergency response	Bosch	Yayasan Sikola Minombe	Palu	Women leadership to encourage sustainability of livelihood disaster and disaster mitigation
Support to human rights defenders	Government of the Netherlands	Yayasan Suara Nurani Minesa (YSNM)	Manado	Mainstreaming the protection of human rights defenders in village community of Paputungan village, Tanah Putih village and Jayakarsa village, Likupang Barat districts, Minahasa Utara district, Sulawesi Utara
Support to human rights defenders	Government of the Netherlands	Celebes Institute	Palu	Increasing capacity and protection of human rights defenders of community based environmental sectors in the development of Salo Pebatua 2 hydroelectric power plant
Support to human rights defenders	Government of the Netherlands	Jaringan Advokasi Tambang (Jatam) Kalimantan Timur	Samarinda	Mainstreaming the protection of human rights defenders of Ongko Asa village, Kutai Barat, Kalimantan Timur
Support to human rights defenders	Government of the Netherlands	Jaringan Advokasi Tambang (Jatam) Sulawesi Tengah	Palu	Improving community awareness and knowledge about the importance of protection and security mechanisms in the effect of strengthening human rights in the environmental sector
Support to human rights defenders	Government of the Netherlands	LBH Semarang	Semarang	Establishment of human rights defenders protection in Sukoharjo District, Province of Central Java in strengthening the environment
Support to human rights defenders	Government of the Netherlands	Walhi Jawa Timur	Surabaya	Protection and strengthening the capacity of human rights defenders dealing with conflicts of forestry in Banyuwangi, East Java
Support to human rights defenders	Government of the Netherlands	Walhi Sumatera Barat	Padang	Improving protection of human rights defenders in the environmental sector
Support to human rights defenders	Government of the Netherlands	Walhi Sumatera Selatan	Palembang	Mainstreaming of protection and security for human rights defenders in the community Lebak Rawang from the palm oil plantation expansion

Program Name	Donor	Grantee Name	Location	Project Title
Support to human rights defenders	Government of the Netherlands	Imparsial	Jakarta	Strengthening civil society consolidation in encouraging the revision of Law 39 of 1999 concerning human rights for a comprehensive protection of human rights
Support to human rights defenders	Government of the Netherlands	LBH Pers	Jakarta	Mainstreaming the protection of human rights defenders in the environmental sector through media advocacy
Support to human rights defenders	Government of the Netherlands	Perkumpulan Elsam	Jakarta	Efforts to support Komnas ham for establishing effective and responsive protection mechanism and gender mainstreaming
Support to strengthen the capacity of CSOs to empower marginalized groups to improve their socio economic conditions (program Peduli)	The Asia Foundation	SCF (Sulawesi Community Foundation)	Makassar	Sipakatau Sipakalebbi (mutualizing and valuing)
Support to strengthen the capacity of CSOs to empower marginalized groups to improve their socio economic conditions (program Peduli)	The Asia Foundation	Pusat Pengembangan Sumberdaya Wanita Jakarta (PPSW Jakarta)	Tangerang	Improving Cina Benteng women participation in city policy to make culture village in Kelurahan Mekarsari Kec. Neglasari, Tangerang City
Support to strengthen the capacity of CSOs to empower marginalized groups to improve their socio economic conditions (program Peduli)	The Asia Foundation	SSS Pundi (Sumatera Sustainable Support)	Jambi	Sudung - strategy to support the life and resources of the Anak Dalam tribe (SAD) along Jalan Lintas Tengah Sumatera
Support to strengthen the capacity of CSOs to empower marginalized groups to improve their socio economic conditions (program Peduli)	The Asia Foundation	Karsa	Palu	Pataka III - strengthening of kampung governance in securing fulfillment of basic rights in isolated areas
Mainstreaming peatland restoration and management at the village level in Indonesia	UNOPS	JMGR	Pekanbaru	Encouraging CSO participation in community collaborative monitoring in the implementation of peat restoration

Program Name	Donor	Grantee Name	Location	Project Title
Mainstreaming peatland restoration and management at the village level in Indonesia	UNOPS	Walhi Riau	Pekanbaru	Monitoring peat restoration and encouraging speed recovery in Riau Province
Mainstreaming peatland restoration and management at the village level in Indonesia	UNOPS	PT PPMA Papua (Perkumpulan Terbatas untuk Pengkajian dan Pemberdayaan Masyarakat Adat Papua)	Papua	Arrangement of peat area for protection of peat ecosystem and improvement of welfare in community of Mappi District, Papua Province
Mainstreaming peatland restoration and management at the village level in Indonesia	UNOPS	FKKM (Yayasan Kehutanan Masyarakat Indonesia)	Bogor	Strengthening participative and sustainable restoration planning in 3 peat villages in Merauke District, Papua Province
Mainstreaming peatland restoration and management at the village level in Indonesia	UNOPS	Yayasan Satu Nama	Yogyakarta	Strengthening village community access in peat restoration through institution strengthening of peat land village in Mappi and Merauke districts, Papua Province
Mainstreaming peatland restoration and management at the village level in Indonesia	UNOPS	Yayasan Auriga Nusantara	Bogor	Independent monitoring of peat restoration
Mainstreaming peatland restoration and management at the village level in Indonesia	UNOPS	Walhi Kalimantan Selatan	Banjarbaru	Independent monitoring of peats ecosystem restoration in South Kalimantan
Mainstreaming peatland restoration and management at the village level in Indonesia	UNOPS	Walhi Jambi	Jambi	Improvement of peat governance policy and protection of the people's governance area
Mainstreaming peatland restoration and management at the village level in Indonesia	UNOPS	JMGJ	Jambi	Making independent and autonomous mgt of peat community resources access as well as to be capacity to act forward in managing sustainable peatlands
Mainstreaming peatland restoration and management at the village level in Indonesia	UNOPS	Walhi Papua	Jayapura	Encouraging independent monitoring of peat ecosystem restoration in Merauke District, Papua Province

Program Name	Donor	Grantee Name	Location	Project Title
Mainstreaming peatland restoration and management at the village level in Indonesia	UNOPS	Walhi Kalimantan Tengah	Palangkaraya	The implementation of protection of the people's management areas through peats ecosystem restoration monitoring
Mainstreaming peatland restoration and management at the village level in Indonesia	UNOPS	Walhi Sumatera Selatan	Palembang	Implementation of protection of wilayah kelola rakyat and peat ecosystem through monitoring restoration of peat ecosystem by encouraging regulation of peat ecosystem protection and law enforcement
Mainstreaming peatland restoration and management at the village level in Indonesia	UNOPS	Walhi Kalimantan Barat	Pontianak	Independent monitoring of peat restoration
Mainstreaming peatland restoration and management at the village level in Indonesia	UNOPS	Eknas Walhi	Jakarta	Implementation of protection of wilayah kelola rakyat and peat ecosystem through monitoring restoration of peat ecosystem by encouraging regulation of peat ecosystem protection and law enforcement
The "Community Adaptation for Forest-Food Based Management in Saddang Watershed Ecosystem" Project in Indonesia	Adaptation Fund	Yayasan Tim Layanan Kehutanan Masyarakat (TLKM Foundation)	Makassar	Community Adaptation for Forest Food Based management in Saddang Watershed Ecosystem in South Sulawesi
Support to human rights defenders	Government of the Netherlands	ICEL (Indonesia center for environment law)	Jakarta	Encouraging the Mainstreaming of Anti Strategic Lawsuit / Litigation Against Public Participation Regulations at the Ministry of Environment and Forestry







Annex 5 : Sub-grants Contracted in 2020

PROGRAMME NAME	GRANTEE NAME	Sum of CONTRACT VALUE (IDR)
AF-SADDANG	Yayasan Tim Layanan Kehutanan Masyarakat (TLKM Foundation)	10,718,601,600
	AF-SADDANG Total	10,718,601,600
BOSCH EMERGENCY	Yayasan Sikola Minombe	809,180,000
	BOSCH EMERGENCY Total	809,180,000
DPG	EKNAS WALHI	506,400,000
	FKKM (YAYASAN KEHUTANAN MASYARAKAT INDONESIA)	1,588,625,000
	JMGJ	492,495,000
	JMGR	500,400,000
	PT PPMA Papua (Perkumpulan Terbatas Untuk Pengkajian dan Pemberdayaan Masyarakat Adat Papua)	2,446,300,000
	WALHI JAMBI	480,100,000
	WALHI KALIMANTAN BARAT	497,400,000
	WALHI KALIMANTAN SELATAN	499,840,000
	WALHI KALIMANTAN TENGAH	505,940,000
	WALHI PAPUA	930,700,000
	WALHI RIAU	495,390,000
	WALHI SUMATERA SELATAN	499,840,000
	Yay Auriga Nusantara	885,550,000
	YAYASAN SATU NAMA	3,257,960,000
	DPG Total	13,586,940,000
HRD	CELEBES INSTITUTE	275,000,000
	IMPARSIAL	490,400,000
	JARINGAN ADVOKASI TAMBANG (JATAM) KALIMANTAN TIMUR	274,825,000
	JARINGAN ADVOKASI TAMBANG (JATAM) SULAWESI TENGAH	274,925,000
	LBH PERS	499,820,000
	LBH SEMARANG	275,000,000
	PERKUMPULAN ELSAM	500,000,000
	WALHI JAWA TIMUR	274,856,000
	WALHI SUMATERA BARAT	274,900,000
	WALHI SUMATERA SELATAN	275,000,000
	Yayasan Suara Nurani Minesa (YSNM)	275,000,000
	ICEL (Indonesia center for environment law)	500,000,000
	HRD Total	4,189,726,000
PEDULI 3	KARSA	350,000,000
	Pusat Pengembangan Sumberdaya Wanita Jakarta (PPSW Jakarta)	90,000,000
	SCF (Sulawesi Community Foundation)	350,151,250
	SSS PUNDI (Sumatera Sustainable Support)	350,000,000
	PEDULI 3 Total	1,140,151,250
Grand Total		30,444,598,850

Annex 6 : Our Publications in 2020

No.	Title	Published by
1	Buku saku pembentukan forum pemangku kepentingan (<i>Pocket book for forming stakeholders fora</i>)	KEMITRAAN & SKK Migas
2	Modul pelebagaan badan usaha milik kampung (BUM Kampung) (<i>An institutional model for village owned enterprises</i>)	KEMITRAAN & SKK Migas
3	Modul revitalisasi musrenbang kampung dan distrik (<i>Module for revitalizing local development planning meetings at villages and districts</i>)	KEMITRAAN & SKK Migas
4	Buku saku integrasi CDP dalam sistem perencanaan pembangunan daerah (<i>Pocket book for integrating CDP into regional development planning</i>)	KEMITRAAN & SKK Migas
5	Modul monografi kampung (<i>Village monography module</i>)	KEMITRAAN & SKK Migas
6	Sekolah Demokrasi Aceh: buku panduan (<i>Aceh democracy school: guidebook</i>)	KEMITRAAN & Perkumpulan Sepakat & KID (Komunitas Indonesia Demokrasi)

No.	Title	Published by	
7	Menyibak yang tidak terlihat menyuarakan yang tidak terdengar (<i>visualizing the unseen, voicing the unheard</i>)	KEMITRAAN & PPSW Jakarta	
8	Berkampung di kelukup beradat ke rimba (<i>Living in a forest village, maintaining tradition in the jungle</i>)	KEMITRAAN & SSS Pundi Sumatera	
9	Buku panduan tata cara pencegahan dan pengendalian kebakaran hutan dan lahan gambut berbasis desa (<i>Guidebook for approaches to preventing and controlling forest and peatland fires at village level</i>)	KEMITRAAN & Badan Restorasi Gambut (BRG)	
10	Kurikulum Pelatihan bagi Pelatih: Pengintegrasian Restorasi Gambut ke dalam Perencanaan dan Penganggaran Desa (<i>Train the trainer curriculum: integrating peatland restoration into village planning and budgeting</i>)	KEMITRAAN & Badan Restorasi Gambut (BRG)	
11	Buku Panduan Pengintegrasian Aspek Perlindungan dan Pengelolaan Gambut ke dalam Perencanaan dan Penganggaran Desa (<i>Guidebook for integrating aspects of environmental and peatland management into village planning and budgeting</i>)	KEMITRAAN & Badan Restorasi Gambut (BRG)	
12	Panduan Pengarusutamaan Gender dan Inklusi Sosial dalam Program Desa Peduli Gambut (<i>Guide to gender mainstreaming and social inclusion into the Care for Peatlands Village Program</i>)	KEMITRAAN & Badan Restorasi Gambut (BRG)	
13	CERITA PERUBAHAN Tata Kelola Pengendalian Karhutla Berbasis Multipihak: Studi Kasus Kabupaten Pulang Pisau, Kalimantan Tengah (<i>STORIES OF CHANGE the governing of multi-stakeholder based forest fire management: case study in Pulang Pisau Region, Central Kalimantan</i>)	KEMITRAAN & Badan Restorasi Gambut (BRG)	

No.	Title	Published by	
14	Buku Panduan: Panduan Teknis Community Development dan Empowerment Program Desa Peduli Gambut (<i>Guidebook: Technical guide on Community Development and Empowerment for the Program for the Villages Care for Peatlands Program</i>)	KEMITRAAN & Badan Restorasi Gambut (BRG)	
15	INKLUSI SOSIAL Sepuluh Kisah Peduli Masyarakat Adat dan Lokal Terpencil Nusantara (<i>SOCIAL INCLUSION Ten cases on caring for customary communities isolated local communities across the archipelago</i>)	KEMITRAAN	
16	GETAR DI KHATULISTIWA bertahan, berbareng, bangkit di lembah Palu (<i>QUAKE ON THE EQUATOR surviving, together, arising in the Palu valley</i>)	KEMITRAAN	
17	Desa berencana gambut terjaga: cerita perubahan pengintegrasian restorasi gambut ke dalam perencanaan dan penganggaran desa (<i>Villages plan, peatlands are protected: stories of change in integrating peatland restoration into village planning and budgeting</i>)	KEMITRAAN & Badan Restorasi Gambut (BRG)	
18	Empat Menyemai Gambut: Praktik-Praktik Revitalisasi Ekonomi di Desa Peduli Gambut (<i>Four fostered Peatlands: practices to revitalize the economy of care for peatland villages</i>)	KEMITRAAN & Badan Restorasi Gambut (BRG)	
19	Modul Pelatihan Tenaga Fasilitator Desa Program Desa Peduli Gambut (<i>Facilitators' training module for Care for Peatland Villages Program</i>)	KEMITRAAN & Badan Restorasi Gambut (BRG)	

Annex 7 : Audited Financial Statement



governance
reform in
Indonesia

DIRECTORS' STATEMENT LETTER RELATING TO THE RESPONSIBILITY ON THE FINANCIAL STATEMENTS FOR THE YEAR ENDED DECEMBER 31, 2020 THE PARTNERSHIP FOR GOVERNANCE REFORM

We, the undersigned:

1. Name : Laode M. Syarif
Office address : Jl. Taman Margasatwa Raya No. 26C, Ragunan, Jakarta Selatan
Domicile as stated in ID Card : Makasar
Phone Number : 021 – 22780580
Position : Executive Director
2. Name : Budi Setiawan
Office address : Jl. Taman Margasatwa Raya No. 26C, Ragunan, Jakarta Selatan
Domicile as stated in ID Card : Jakarta
Phone Number : 021 – 22780580
Position : Head of Finance and Grants

State that:

1. We are responsible for the preparation and presentation of the financial statement;
2. The financial statements have been prepared and presented in accordance with Indonesian Financial Accounting Standards;
3. a. All information contained in the financial statements is complete and correct;
b. The financial statements do not contain misleading material information or facts, and do not omit material information and facts;
4. We are responsible for the Organization internal control system.

This statement letter is made truthfully.

Jakarta, October 4, 2021

Executive Director

Head of Finance and Grants





(Laode M. Syarif) (Budi Setiawan)

Statement of Financial Position
THE PARTNERSHIP FOR GOVERNANCE REFORM

As of December 31, 2020 and 2019

(Expressed in USD, unless otherwise stated)

	<u>Notes</u>	<u>2020</u>	<u>2019</u>
ASSETS			
Current Assets			
Cash and cash equivalent	4	2,140,872	2,442,341
Program receivable	5	215,543	160,956
Advances	6	76,392	112,428
Prepaid expenses	7	26,327	28,080
Total Current Assets		2,459,134	2,743,805
TOTAL ASSETS		2,459,134	2,743,805
LIABILITIES AND NET ASSETS			
Current Liabilities			
Accruals	8	458,732	222,417
Taxes payable	9	5,772	2,885
Total Current Liabilities		418,728	225,302
Noncurrent Liabilities			
Post-employment benefit obligation	10	59,233	42,548
TOTAL LIABILITIES		523,737	267,850
NET ASSETS			
Restricted	11	1,119,765	1,542,185
Unrestricted		815,632	933,770
TOTAL NET ASSETS		1,935,397	2,475,955
TOTAL LIABILITIES AND NET ASSETS		2,459,134	2,743,805

See accompanying Notes to Financial Statements
which are an integral part of the Financial Statements taken as a whole

Statement of Activities

THE PARTNERSHIP FOR GOVERNANCE REFORM

For the Years Ended December 31, 2020 and 2019

(Expressed in USD, unless otherwise stated)

	Notes	2020			2019		
		Unrestricted	Restricted	Total	Unrestricted	Restricted	Total
REVENUES							
Contributions	12	437,776	4,391,177	4,828,953	553,319	8,272,238	8,825,557
Interest income		(2,204)	28,148	25,944	32,797	14,073	46,870
Other income		80,277	(40,038)	40,239	138,406	(27,601)	110,805
Total Revenues		515,849	4,379,287	4,895,136	724,522	8,258,710	8,983,232
EXPENSES							
Programme expenses	13	(138,617)	(4,739,528)	(4,878,145)	(205,200)	(8,821,302)	(9,026,502)
Operational support expenses		(425,603)	-	(425,603)	(451,995)	-	(451,995)
Refund to donors		-	(129,641)	(129,641)	-	-	-
Total Expense		(564,220)	(4,869,169)	(5,433,389)	(657,195)	(8,821,302)	(9,478,497)
(Decrease) increase in net assets before other comprehensive income		(48,371)	(489,882)	(538,253)	67,327	(562,592)	(495,265)
OTHER COMPREHENSIVE INCOME							
Actuarial decrease of loss		(2,305)	-	(2,305)	640	-	640
(Decrease) increase in net assets after other comprehensive income		(50,676)	(489,882)	(540,558)	67,967	(562,592)	(494,625)

See accompanying Notes to Financial Statements
which are an integral part of the Financial Statements taken as a whole

Statements of Changes in Net Assets

THE PARTNERSHIP FOR GOVERNANCE REFORM

For the Years Ended December 31, 2020 and 2019

(Expressed in USD, unless otherwise stated)

	Notes	2020			2019		
		Unrestricted	Restricted	Total	Unrestricted	Restricted	Total
NET ASSETS AT BEGINNING OF THE YEAR		933,770	1,542,185	2,475,955	864,432	2,106,148	2,970,580
(Decrease) increase in net assets after other comprehensive income		(50,676)	(489,882)	(540,558)	67,967	(562,592)	(494,625)
Adjustment for closing project ended December 31, 2020		(67,462)	67,462	-	1,371	(1,371)	-
NET ASSETS AT END OF THE YEAR	11	815,632	1,119,765	1,935,397	933,770	1,542,185	2,475,955

See accompanying Notes to Financial Statements which are an integral part of the Financial Statements taken as a whole

Statement of Cash Flow
THE PARTNERSHIP FOR GOVERNANCE REFORM

For the Years Ended December 31, 2020 and 2019

(Expressed in USD, unless otherwise stated)

	2020	2019
CASH FLOWS FROM OPERATING ACTIVITIES		
Contributions	4,828,953	8,825,557
Interest income	25,944	46,870
Other income	40,239	110,805
Expenses	(5,433,389)	(9,478,497)
Adjustment for increase in employee benefits obligation	14,380	11,223
(Decrease) in net assets from operating before changes in working capital	(523,873)	(484,042)
(Increase) in program receivable	(54,587)	(114,347)
(Increase) decrease in advances	36,036	144,310
(Increase) decrease in prepaid expenses	1,753	28,028
Increase (decrease) in accruals	236,315	(358,351)
Increase (decrease) in taxes payable	2,887	(8,966)
NET (DECREASE) IN CASH AND CASH EQUIVALENT	(301,469)	(793,368)
CASH AND CASH EQUIVALENT AT BEGINNING OF THE YEAR	2,442,341	3,235,709
CASH AND CASH EQUIVALENT AT END OF THE YEAR	2,140,872	2,442,341

See accompanying Notes to Financial Statements
which are an integral part of the Financial Statements taken as a whole



INDEPENDENT AUDITORS' REPORT

No. : 00176/2.0641/AU.1/11/1491-1/1/X/2021

Board of Trustees, Supervisory, Executive and Management
The Partnership for Governance Reform

We have audited the accompanying financial statements of The Partnership for Governance Reform ("the Organization"), which comprise the statement of financial position as of December 31, 2020, and the statement of activities and cash flows for the year then ended, and a summary of significant accounting policies and other explanatory information.

Management's Responsibility for the Financial Statements

Management is responsible for the preparation and fair presentation of such financial statements in accordance with Indonesian Financial Accounting Standards, and for such internal controls as management determines is necessary to enable the preparation of financial statements that are free from material misstatement, whether due to fraud or error.

Auditors' Responsibility

Our responsibility is to express an opinion on these financial statements based on our audit. We conducted our audit in accordance with Standards on Auditing established by the Indonesian Institute of Certified Public Accountants. Those standards require that we comply with ethical requirements and plan and perform the audit to obtain reasonable assurance about whether the financial statements are free from material misstatement.

An audit involves performing procedures to obtain audit evidence about the amounts and disclosures in the financial statements. The procedures selected depend on the auditor's judgment, including the assessment of the risks of material misstatement of the financial statements, whether due to fraud or error. In making those risk assessments, the auditor considers internal control relevant to the Organization's preparation and fair presentation of the Organization's financial statements in order to design audit procedures that are appropriate in the circumstances, but not for the purpose of expressing an opinion on the effectiveness of the Organization's internal control. An audit also includes evaluating the appropriateness of accounting policies used and the reasonableness of accounting estimates made by management, as well as evaluating the overall presentation of the financial statements.

We believe that the audit evidence we have obtained is sufficient and appropriate to provide a basis for our audit opinion.



Opinion

In our opinion, the accompanying financial statements present fairly, in all material respects, the financial position of The Partnership for Governance Reform as of December 31, 2020, and statement of activities and cash flows for the year then ended, in accordance with Indonesian Financial Accounting Standards.

Emphasis of Matter

As more fully described in Note 16 to the financial statements of The Partnership for Governance Reform, the Organization may be materially impacted by the outbreak of a novel coronavirus (COVID-19), which was declared a global pandemic by the World Health Organization in March 2020. Our opinion is not modified with respect to this matter.

Other Matter

Our audit was conducted for the purpose of forming an opinion on the basic financial statements taken as a whole. The list of inventory of non-expendable equipment and summary activity report per project as presented in Supplementary Information are presented for the purposes of additional analysis and not required part of the auditing procedures applied in the audit of the basic financial statements. Such information has been subjected to the auditing procedures applied in the audit of the basic financial statements and, in our opinion, is fairly stated in all material respects in relation to the basic financial statements taken as a whole.

RAMA WENDRA

Registered Public Accountants

A handwritten signature in black ink, appearing to be 'S. Hasiholan Hutabarat', written over a faint circular stamp.

S. Hasiholan Hutabarat, CPA, CIA
Public Accountant License No. AP. 1491

Jakarta, October 4, 2021

NOTICE TO READERS

The accompanying financial statements are intended to present the financial positions, results of operations, changes in net assets and cash flows in accordance with financial accounting standards in Indonesia and not those of any other countries and jurisdiction. The standards, procedures and practices to audit such financial statements are those auditing standards issued by Indonesian Institute of Certified Public Accountants.





duliada
inklusos



Jl. Taman Margasatwa No. 26C
Ragunan - South Jakarta 12550, Indonesia
P +62 21 2278 0580
F +62 21 781 2325

www.kemitraan.or.id |   [kemitraan_ind](https://twitter.com/kemitraan_ind) |    [Kemitraan Indonesia](https://www.youtube.com/KemitraanIndonesia)